



Introducing

PowerYield Portfolios™

An investment service that seeks to generate monthly income from stocks that typically are not thought of as dividend payers.



PowerYield Portfolios™

SogoTrade Asset Management's PowerYield Portfolios™ are built on the family of YieldMax® ETFs, a suite of exchange-traded funds that actively manage an investment strategy typically utilized by options traders: the covered call strategy. The covered call strategy is a widely-known alternative income strategy that uses options in an effort to harvest the volatility of individual stocks, including stocks that offer little or no dividends of their own, such as Tesla, Nvidia, Coinbase, Google, Meta, AMD, Apple, Microsoft, and many more.

Commission Free

Commission free with goal of monthly income. SogoTrade Asset Management manages everything for you, determines the composition of the portfolio, and executes all trades for a single management fee*.

Monthly Income

PowerYieldPortfolios™ are designed to deliver an alternative source of monthly income from a proprietary portfolio of ETFs. The ETFs comprising PowerYieldPortfolios™ have the potential to generate monthly yields that, when compiled together, also offer the benefits of diversification from a single stock. Any income received can be automatically reinvested into the strategy in an attempt to benefit from the advantages of compounding.



**PowerYield
Portfolios™**



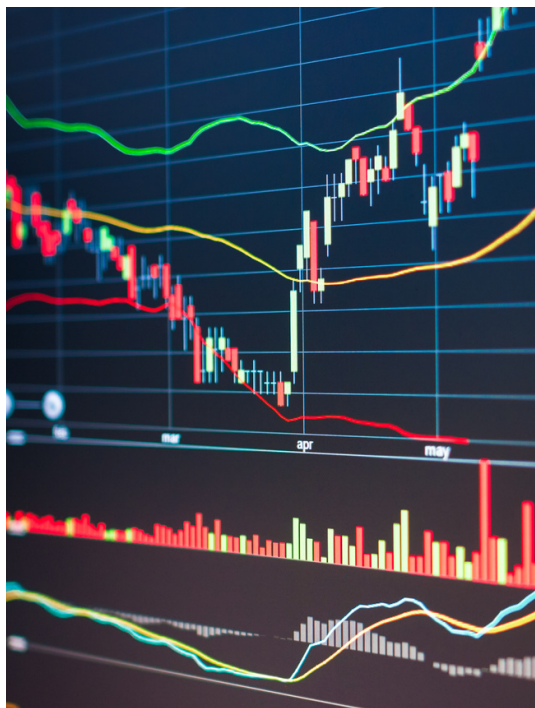


Potential Benefits of PowerYield Portfolios™

- High income potential: Designed to deliver meaningful monthly yields.
- Compounding power: Automatically reinvest income back into the strategy. Compounding can make your investment grow faster over time.
- Access: Gain exposure to an investment strategy typically utilized by options investors.
- Convenience and ease: Avoid the anxiety of managing multiple options strategies simultaneously.
- Diversification: Manage the risk of single stock covered call strategies with a portfolio solution.
- Simple fee. SogoTrade Asset Management charges one simple fee regardless of portfolio changes and required trading.

Our Mission

SogoTrade Asset Management's mission is to provide investment opportunities for our clients in a simple cost-effective manner. PowerYieldPortfolios™ innovative design seek to deliver an alternative source of monthly income.



Contact

Nationwide Call Center

1-888-709-7646

Poweryieldportfolios.com



PowerYield Portfolios™

A solution that seeks monthly income from volatility harvesting of widely held stocks

Disclosure

Before investing you should carefully consider each Fund's investment objectives, risks, charges and expenses. This and other information is in the prospectus. Please read the prospectuses carefully before you invest.

Options are not suitable for all investors. There are risks involved in any option strategy. Individuals should not enter into option transactions until they have read and understood the option disclosure document titled "Characteristics and Risks of Standardized Options," which outlines the purposes and risks of option transactions. This booklet is available from your Financial Advisor or at <http://www.theocc.com/about/publications/character-risks.jsp>. Supporting documentation of claims will be supplied upon request.

Options Contracts. The use of options contracts involves investment strategies and risks different from those associated with ordinary portfolio securities transactions. The prices of options are volatile and are influenced by, among other things, actual and anticipated changes in the value of the underlying reference asset, including the anticipated volatility, which are affected by fiscal and monetary policies and by national and international political, changes in the actual or implied volatility or the reference asset, the time remaining until the expiration of the option contract and economic events.

PowerYield Distribution Rate Disclosure

The Distribution rate is calculated as the sum of all income paid in our distribution rate tracking account during the preceding calendar month, divided by the average balance during that month, then that figure is multiplied by 12. The distribution is a combination of option income and return of capital.

Distribution Risk. As part of the Fund's investment objective, the Fund seeks to provide current income. There is no assurance that the Fund will make a distribution in any given month. If the Fund does make distributions, the amounts of such distributions will likely vary greatly from one distribution to the next.

The distribution rate is not the same as total return. The distribution rate is based on past distributions which may not continue.

Distributions may include a return of capital.

Derivatives Risk. Derivatives are financial instruments that derive value from the underlying reference asset or assets, such as stocks, bonds, or funds (including ETFs), interest rates or indexes. The Fund's investments in derivatives may pose risks in addition to, and greater than, those associated with directly investing in securities or other ordinary investments, including risk related to the market, imperfect correlation with underlying investments or the Fund's other portfolio holdings, higher price volatility, lack of availability, counterparty risk, liquidity, valuation and legal restrictions.

High Portfolio Turnover Risk. The Fund may actively and frequently trade all or a significant portion of the Fund's holdings.

Liquidity Risk. Some securities held by the Fund, including options contracts, may be difficult to sell or be illiquid, particularly during times of market turmoil.

Investing in securities involves risk of loss that clients should be prepared to bear. No investment process is free of risk; no strategy or risk management technique can guarantee returns or eliminate risk in any market environment. There is no guarantee that your investment will be profitable. Past performance is not a guide to future performance. The value of investments, as well any investment income, is not guaranteed and can fluctuate based on market conditions. Diversification does not assure a profit or protect against loss.

* SAM Managed Account Service Fees

SAM is compensated for its Managed Account services by charging a fee based on the net market value of a Client's Account. SAM reserves the right, in its sole discretion, to negotiate, reduce or waive the advisory fee for certain Client Accounts for any period of time determined by SAM. In addition, SAM may reduce or waive its fees for the Accounts of some Clients without notice to, or fee adjustment for, other Clients. The annual management fee for SAM Standard Service managed accounts is 0.75% on the assets under management in the account. For PowerYield Portfolio accounts, in addition to the Standard Service management fee, SAM charges an additional fee of another 0.5%. SAM has a minimum monthly fee of \$5. Fees are charged on a monthly basis.



PowerYield Portfolios™

A solution that seeks monthly
income from volatility harvesting
of widely held stocks

Contact

Nationwide Call Center

1-888-709-7646

Poweryieldportfolios.com